

## SolaMate Options



### **SolaMate Fx**

Dimensions (mm): 3431(L) x 1028(W) x 86

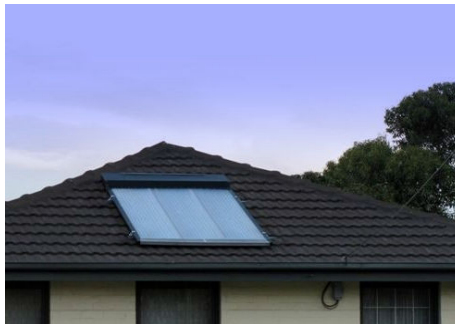
**Application:** SolaMate Fx is our standard product. It brings in fresh solar-heated air from outside during the day. On summer nights it provides the maximum cooling benefit by bringing in cool night air as soon as the sun goes down.



### **SolaMate Fx (Horizontal Mount)**

Dimensions (mm): 3431(L) x 1028(W) x 86

**Application:** The SolaMate Fx panel can also be mounted horizontally as shown. The panel is identical to the vertical mounted panel, however we provide additional flashing for installation.



### **SolaMate Sp ('Stumpy')**

Dimensions (mm): 2512(L) x 1530(W) x 86

**Application:** SolaMate Sp is simply a shorter, wider version of the SolaMate Fx. It has all the same benefits and performance characteristics as the SolaMate Fx. The surface area for solar collection is identical to the Fx so the total energy harvested is also the same.